

Drain: J.W. BRENOLLE DRAIN **Drain #:** 77
Improvement/Arm: SEDEGWICK - SECTION 4
Operator: JDH **Date:** 10-20-03
Drain Classification: Urban/Rural **Year Installed:** 2003

GIS Drain Input Checklist

- Digitize & Attribute Tile Drains N/A
- Digitize & Attribute Storm Drains JRH 10-20
- Digitize & Attribute SSD JRH 10-21
- Digitize & Attribute Open Ditch N/A
- Sum drain lengths & Validate JRH 10-21
- Enter Improvements into Posse JRH 10-21
- Enter Drain Age into Posse JRH
- Sum drain length for Watershed in Posse JRH
- Stamp Plans JRH 10-21
- Pull Source Documents for Scanning JRH 10-21

Gasb 34 Footages for Historical Cost Drain Length Log

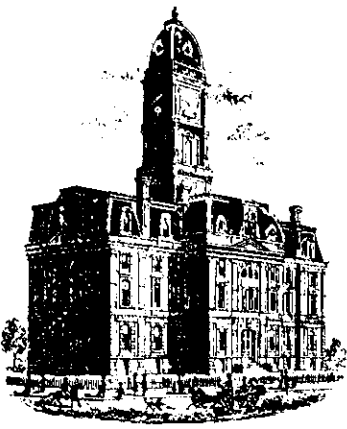
Drain-Improvement: J.W. BRENOLÉ DRAIN - SEDGWICK - SECTION 1

Drain Type:	Size:	Length SURVEYORS (FINAL REPORT)	Length (DB Query)	Length Reconcile	Price:	Cost:
SSD	6"	7158'	7158'	∅		
	8"	625'	625'	∅		
RCP	12"	609'	609'	∅		
	15"	669'	669'	∅		
	18"	669'	669'	∅		
	21"	156'	156'	∅		
	24"	88'	88'	∅		

Sum: 9,974' 9,974' ∅ _____

Final Report: _____

Comments:



SURVEYOR'S OFFICE

Hamilton County

Kenton C. Ward, Surveyor

Phone (317) 776-8495

Fax (317) 776-9628

Suite 188

One Hamilton County Square

Noblesville, Indiana 46060-2230

November 21, 2002

To: Hamilton County Drainage Board

Re: J.W. Brendle Drain, Sedgwick Arm

Attached is a petition, non-enforcement request, plans, calculations, quantity summary and assessment roll for the Sedgwick Arm, J.W. Brendle Drain. I have reviewed the submittals and petition and have found each to be in proper form.

I have made a personal inspection of the land described in the petition. Upon doing so, I believe that the drain is practicable; will improve the public health; benefit a public highway and be of public utility; and that the costs, damages, and expenses of the proposed drain will probably be less than the benefits accruing to the owners of land likely to be benefited. The drain will consist of the following:

6" SSD	7,775 ft	18" RCP	684 ft
12" RCP	651 ft	21" RCP	159 ft
15" RCP	674 ft	24" RCP	93 ft

The total length of the drain will be 10,036 feet

The subsurface drains (SSD) to be part of the regulated drain are those located under the curbs and those main lines between lots in rear yard. Only the main SSD lines, which are located within the right of way, are to be maintained as regulated drain. Laterals for individual lots will not be considered part of the regulated drain. The portion of the SSD which will be regulated other than those under curbs are as follows:

South side of lot 26, between lots 13 and 14; south line of Common Area "A" adjoining lot 13. West side of lot 13 and west side of lot 14.

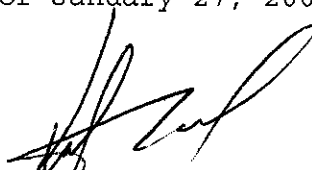
I have reviewed the plans and believe the drain will benefit each lot equally. Therefore, I recommend each lot be assessed equally. I also believe that no damages will result to landowners by the construction of this drain. I recommend a maintenance assessment of \$65.00 per lot, \$10.00 per acre for roadways and common areas, with a \$65.00 minimum. With this assessment the total annual assessment for this drain/this section will be \$2,204.50.

Parcels assessed for this drain may be assessed for the Long Branch Drain at sometime in the future. Parcels assessed for this drain will also be assessed for the J.W. Brendle Drain.

I believe this proposed drain meets the requirements for Urban Drain Classification as set out in IC 36-9-27-67 to 69. Therefore, this drain shall be designated as an Urban Drain.

I recommend that upon approval of the above proposed drain that the Board also approve the attached non-enforcement request. This request is for the reduction of the regulated drain easement to those easements widths as shown on the secondary plat for Sedgwick as recorded in the office of the Hamilton County Recorder.

I recommend the Board set a hearing for this proposed drain for January 27, 2003.



Kenton C. Ward
Hamilton County Surveyor

KCW/pll

STATE OF INDIANA)
)
COUNTY OF HAMILTON)

TO: HAMILTON COUNTY DRAINAGE BOARD
% Hamilton County Surveyor, Courthouse, Noblesville, IN 46060

In the matter of Sedgwick Subdivision,
Section _____ Drain Petition.

Petitioner is the owner of all lots in the land affected by the proposed new regulated drain. The drainage will affect various lots in Sedgwick, a subdivision in Hamilton County, Indiana. The general route of such drainage shall be in existing easements and along public roads as shown in the plans on file in the Surveyor's Office.

Petitioner believes that the cost, damages and expenses of the proposed improvement will be less than the benefits which will result to the owners of the land likely to be benefited thereby. Petitioner believes the proposed improvements will:

- (a) improve public health
- (b) benefit a public street
- (c) be of public utility

Petitioner agrees to pay the cost of construction of the drainage system and requests periodic maintenance assessments by the Board thereafter.

The Petitioner also agrees to the following:

1. To provide the Drainage Board a Performance Bond for the portion of the drainage system which will be made a regulated drain. The bond will be in the amount of 100% of the Engineers estimate. The bond will be in effect until construction of 100% of the system is completed and so certified by the Engineer.
2. The Petitioner shall retain an Engineer throughout the construction phase. At completion of the project the Petitioner's Engineer shall certify that the drainage system which is to be maintained as a regulated drain has been constructed as per construction plans.

3. The Petitioner agrees to request in writing to the County Surveyor any changes from the approved plan and must receive written authorization from the County Surveyor prior to implementation of the change. All changes shall be documented and given to the Surveyor to be placed in the Drain File.

4. The Petitioner shall instruct his Engineer to provide a reproducible print on a 24" x 36" mylar of the final design of the Drainage System. This shall be submitted to the County Surveyor prior to the release of the Performance Bond.

5. The Petitioner shall comply with the Erosion Control Plan as as specified on the construction plans. Failure to comply with the Erosion Control Plan shall be determined by the Board as being an obstruction to the drainage system. The County Surveyor shall immediately install or repair the needed measures at Petitioners cost as per IC 36-9-27-46.

The Petitioner further requests that the Drain be classified as an Urban Drain.

GP2-1 Development LLC.

[Signature]

 Signed

David R. Warshaw

 Printed Name

Co. Manager

 Signed

 Printed Name

RECORDED OWNER(S) OF LAND INVOLVED

DATE *September 27, 2002*

FINDINGS AND ORDER

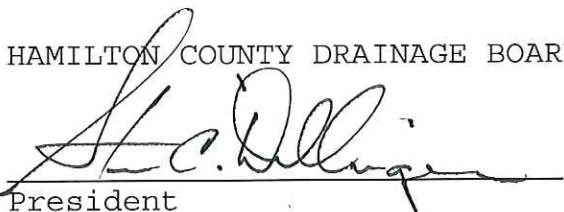
CONCERNING THE MAINTENANCE OF THE

J. W. Brendle Drain, Sedgwick Arm


On this *27th day of January 2003*, the Hamilton County Drainage Board has held a hearing on the Maintenance Report and Schedule of Assessments of the *J. W. Brendle Drain, Sedgwick Arm*.

Evidence has been heard. Objections were presented and considered. The Board then adopted the original/amended Schedule of Assessments. The Board now finds that the annual maintenance assessment will be less than the benefits to the landowners and issues this order declaring that this Maintenance Fund be established.

HAMILTON COUNTY DRAINAGE BOARD



President



Member



Member

Attest: 

**BANNING ENGINEERING, PC
ENGINEERS ESTIMATE**

Project Name: sedgwick subdivision
Project Number: 02022

Date: aug - 15th 2002
Item: Storm

DESCRIPTION	QUANTITY	UNIT	UNIT PRICE	TOTAL
12" RCP PIPE	651	LF	\$17.00	\$11,067.00
15" RCP PIPE	683	LF	\$18.00	\$12,294.00
18" RCP PIPE	684	LF	\$20.00	\$13,680.00
21" RCP PIPE	159	LF	\$22.00	\$3,498.00
24" RCP PIPE	93	LF	\$26.00	\$2,418.00
27" RCP PIPE		LF	\$30.00	\$0.00
30" RCP PIPE		LF	\$33.00	\$0.00
36" RCP PIPE		LF	\$44.00	\$0.00
42" RCP PIPE		LF	\$52.00	\$0.00
48" RCP PIPE		LF	\$62.00	\$0.00
4" HDPE PIPE (SOLID)		LF	\$0.46	\$0.00
6" HDPE PIPE (SOLID)		LF	\$1.27	\$0.00
8" HDPE PIPE (SOLID)		LF	\$2.25	\$0.00
10" HDPE PIPE (SOLID)		LF	\$2.96	\$0.00
12" HDPE PIPE (SOLID)		LF	\$3.44	\$0.00
15" HDPE PIPE (SOLID)		LF	\$5.75	\$0.00
18" HDPE PIPE (SOLID)		LF	\$8.23	\$0.00
24" HDPE PIPE (SOLID)		LF	\$9.35	\$0.00
30" HDPE PIPE (SOLID)		LF	\$14.12	\$0.00
36" HDPE PIPE (SOLID)		LF	\$21.35	\$0.00
42" HDPE PIPE (SOLID)		LF	\$40.75	\$0.00
48" HDPE PIPE (SOLID)		LF	\$48.00	\$0.00
4" HDPE PIPE (PERF)		LF	\$0.46	\$0.00
6" HDPE PIPE (PERF)		LF	\$1.27	\$0.00
8" HDPE PIPE (PERF)		LF	\$2.25	\$0.00
10" HDPE PIPE (PERF)		LF	\$3.21	\$0.00
12" HDPE PIPE (PERF)		LF	\$4.70	\$0.00
15" HDPE PIPE (PERF)		LF	\$5.95	\$0.00
18" HDPE PIPE (PERF)		LF	\$8.23	\$0.00
24" HDPE PIPE (PERF)		LF	\$11.93	\$0.00
30" HDPE PIPE (PERF)		LF	\$18.25	\$0.00
36" HDPE PIPE (PERF)		LF	\$22.35	\$0.00
4" CPP PIPE (SOLID)		LF		\$0.00
6" CPP PIPE (SOLID)		LF		\$0.00
8" CPP PIPE (SOLID)		LF		\$0.00

BANNING ENGINEERING, PC ENGINEERS ESTIMATE

Project Name: sedgwick subdivision
Project Number: 02022

Date: aug - 15th 2002
Item: Storm

DESCRIPTION	QUANTITY	UNIT	UNIT PRICE	TOTAL
10" CPP PIPE (SOLID)		LF		\$0.00
12" CPP PIPE (SOLID)		LF	\$3.58	\$0.00
15" CPP PIPE (SOLID)		LF		\$0.00
18" CPP PIPE (SOLID)		LF		\$0.00
24" CPP PIPE (SOLID)		LF	\$12.03	\$0.00
30" CPP PIPE (SOLID)		LF	\$19.33	\$0.00
36" CPP PIPE (SOLID)		LF		\$0.00
42" CPP PIPE (SOLID)		LF		\$0.00
48" CPP PIPE (SOLID)		LF		\$0.00
INLET / BEEHIVE	22	EA.	\$850.00	\$18,700.00
MANHOLES	4	EA.	\$1,600.00	\$6,400.00
12" END SECTION (CONC.)	1	EA.	\$270.00	\$270.00
15" END SECTION (CONC.)	1	EA.	\$325.00	\$325.00
18" END SECTION (CONC.)	1	EA.	\$350.00	\$350.00
24" END SECTION (CONC.)	1	EA.	\$400.00	\$400.00
30" END SECTION (CONC.)		EA.	\$525.00	\$0.00
36" END SECTION (CONC.)		EA.	\$700.00	\$0.00
42" END SECTION (CONC.)		EA.	\$900.00	\$0.00
12" END SECTION (POLY.)		EA.	\$60.00	\$0.00
GRANULAR BACKFILL	300	CYDS	\$10.00	\$3,000.00
6" SUB-SURFACE	6510	LF	\$4.25	\$27,667.50
4" SUB-SURFACE LOT HOOK-UPS	350	LF	\$4.50	\$1,575.00
GROSS TOTAL				\$101,644.50
CONTENGENCIES 10%				\$10,164.45
			NET TOTAL	\$111,808.95

BANNING ENGINEERING, PC ENGINEERS ESTIMATE

Project Name: sedgwick subdivision
Project Number: 02022

Date: aug - 15th 2002
Item: Pavement

DESCRIPTION	QUANTITY	UNIT	UNIT PRICE	TOTAL
ASPHALT		SYDS	\$12.75	\$0.00
LIME STABILIZATION		SYDS	\$2.75	\$0.00
2' CONCRETE ROLL CURB		LF	\$6.10	\$0.00
2' CONCRETE CHAIRBACK CURB		LF	\$8.50	\$0.00
4' CONCRETE WALK (FRONT OF LOTS)		LF	\$9.60	\$0.00
4' CONCRETE WALK (IN COMMON AREAS)		LF	\$9.60	\$0.00
WALKING PATH		LF	\$12.75	\$0.00
MONUMENTS:				
STREET MARKERS	21	EA.	\$115.00	\$2,415.00
BOUNDARY MARKERS @ R/W	6	EA.	\$250.00	\$1,500.00
POLYGAURD NW-75 (1'x175' rolls) (Membrane Pavement & Crack Sealer)		SFT	\$0.49	\$0.00
BAYEX GLASS GRID 8501 (5'x330' rolls) (Fiberglass Pavement & Crack Sealer)		SYD	\$4.75	\$0.00
GROSS TOTAL				\$3,915.00
CONTENGENCIES 10%				\$391.50
NET TOTAL				\$4,306.50

BANNING ENGINEERING, PC ENGINEERS ESTIMATE

Project Name: sedgwick subdivision
Project Number: 02022

Date: aug - 15th 2002
Item: Erosion Control

DESCRIPTION	QUANTITY	UNIT	UNIT PRICE	TOTAL
SEEDING	16550	SYDS	\$0.55	\$9,102.50
EROSION BLANKETS	6500	SYDS	\$1.25	\$8,125.00
SILT FENCE	4500	LF	\$2.50	\$11,250.00
GABION		SYDS	\$33.00	\$0.00
RIP-RAP	175	SYDS	\$24.00	\$4,200.00

GROSS TOTAL				\$32,677.50
CONTENGENCIES	10%			\$3,267.75
NET TOTAL				\$35,945.25

UNION PLANTERS BANK

International Division - Letter Of Credit Department
9700 N.W 112th Avenue, Miami, Florida 33178
Tel. 786-845-4400 - Fax 786-845-4782
S.W.I.F.T. Address: UPNBUS44MIA - Telex 6737871 UPBMIA

HCDB-2002-00343

September 10, 2002

Beneficiary:
Hamilton County Board of Commissioners
1 Hamilton County Square
Noblesville, IN 46060

Applicant:
GWZ-1 Development, LLC
9011 N. Meridian Street, Suite 202
Indianapolis, IN 46260

Re: Our Irrevocable Standby Letter of Credit No. L025527
Expiration Date and Place: September 10, 2003, available by draft(s) at sight
at the counters of Union Planters Bank

Gentlemen:

By order of our client, GWZ-1 Development, LLC, we hereby issue our Irrevocable Standby Letter of Credit No. L025527, in your favor, for an amount not to exceed in the aggregate Four Thousand Three Hundred Six and 50/100 US Dollars (USD\$4,306.50), available by draft at sight drawn on Union Planters Bank when accompanied by the following documents:

1. Beneficiary's purportedly signed certificate stating that GWZ-1 Development, LLC has failed to complete the Pavement - Monument and Markers in SEDGWICK Subdivision.

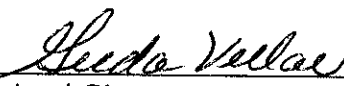
Partial drawings are permitted.

We hereby undertake with you to honor each draft drawn under and in compliance with the terms of this Letter of Credit, if duly presented together with the documents specified at this office on or before the stated expiration date.

Except as otherwise stated, this Letter of Credit is subject to the Uniform Customs and Practice for Documentary Credit (1993 Revision), International Chamber of Commerce Publication No. 500.

Very Truly Yours,


Authorized Signature


Authorized Signature

ORIGINAL

SEP 11 2002


CERTIFICATE OF COMPLETION AND COMPLIANCE

To: Hamilton County Surveyor

Re: Sedgwick Record Drawings

I hereby certify that:

1. I am a Registered Land Surveyor or Engineer in the State of Indiana.
2. I am familiar with the plans and specifications for the above referenced subdivision.
3. I have personally observed and supervised the completion of the drainage facilities for the above referenced subdivision.
4. The drainage facilities within the above referenced subdivision to the best of my knowledge, information and belief have been installed and completed in conformity with all plans and specifications.

Signature:  Date: 1/24/03
Type or Print Name: Jeffrey A. Banning
Business Address: Banning Engineering, P.C.
698 Tower Road, Suite 100, Plainfield, IN 46168
Telephone Number: (317) 839-2581

SEAL



INDIANA REGISTRATION NUMBER

9300091

FILED

JAN 27 2003

OFFICE OF HAMILTON COUNTY SURVEYOR

Asbuilt Structures

Project: SEDGWICK

Engineering Project #: 2022

Structure:	T.C.:	I.E.:	Pipe:	Length:	Original Plans:	Difference:
Existing	910.84	905.14				
102	911.06	905.66	18	208	212	4
102	911.06	905.66				
103	910.89	905.79	18	33		
103	910.89	905.79				
104	910.17	906.07	18	81	84	3
104	910.17	906.07				
105	910.01	906.16	18	52	55	3
105	910.01	906.16				
106	910.27	906.22	18	31		
106	910.27	906.22				
107		906.58	18	102		
109		906.52				
110	910.87	906.53	15	48	reported as 40	8
110	910.88	906.63				
111	910.96	906.76	12	35	37	-2
111	910.96	906.76				
112	910.14	908.35	12	165	176	-11
121	911.09	908.69				
128	912.56	908.21	15	190	191	-1
128	912.56	908.21				
120	912.73	908.03	15	53	55	-2
117	912	907.6				
118	911.04	908.14	12	116	114	2
118	911.04	908.19				
119		909.66	12	267	294	-27
114	910.23	906.83				
116	910.62	907.09	15	54	58	-4
127	914.76	911.16				
126	914.85	910.55	12	26	30	-4
126	914.85	910.3				
125	915.07	909.85	15	101	99	2
125	915.07	909.85				
124	915	909.77	15	26	30	-4
124	915	909.73				
123	912.52	908.64	15	171		
123	912.52	908.52				
122	912.55	908.15	15	26	30	-4
122	912.55	907.95				
120	912.73	907.83	18	20	23	3
120	912.73	907.83				
117	912	907.1	18	142	144	2
117	912	907.15				
115	910.36	906.68	21	156	159	3

115	910.38	906.67				
114	910.23	906.63	24	25	26	-1
114	910.23	906.63				
113		906.53	24	63	67	-4

6" SSD Streets:

Sedgewick Ln	1442
Tralee Ct	580
Donegal Cir	567
Sedgewick Culdesac	40
Tralee Culdesac	45
Linclonshire Blvd	665
x2	

Total: 6678

SSD Lots:

Lot 13-14 (8")	625
CA "A" (6")	185
Lot 26 (6")	295
Total:	<u>1105</u>

RCP Pipe Totals:

	12	609
	15	669
	18	669
	21	156
	24	88

Total Length of Drain: 9974



SURVEYOR'S OFFICE

Hamilton County

Kenton C. Ward, Surveyor
 Phone (317) 776-8495
 Fax (317) 776-9628

Suite 188
 One Hamilton County Square
 Noblesville, Indiana 46060-2230

To: Hamilton County Drainage Board

October 16, 2003

Re: JW Brendle Drain: Sedgwick Sec. 1 Arm

Attached are as-builts, certificate of completion & compliance, and other information for Sedgwick Sec. 1. An inspection of the drainage facilities for this section has been made and the facilities were found to be complete and acceptable.

During construction, changes were made to the drain, which will alter the plans submitted with my report for this drain-dated November 21, 2002. The report was approved by the Board at the hearing held January 27, 2003. (See Drainage Board Minutes Book 6, Pages 531-532)

The changes are as follows:

Structure:	T.C.:	I.E.:	Pipe:	Length:	Original Plans:	Difference:
Existing	910.84	905.14				
102	911.06	905.66	18	208	212	4
102	911.06	905.66				
103	910.89	905.79	18	33		
103	910.89	905.79				
104	910.17	906.07	18	81	84	3
104	910.17	906.07				
105	910.01	906.16	18	52	55	3
105	910.01	906.16				
106	910.27	906.22	18	31		
106	910.27	906.22				
107		906.58	18	102		
109		906.52				
110	910.88	906.63	15	48	reported as 40	8
110	910.88	906.63				
111	910.96	906.76	12	35	37	-2
111	910.96	906.76				
112	910.14	908.35	12	165	176	-11
121	911.09	908.69				
128	912.56	908.21	15	190	191	-1
128	912.56	908.21				
120	912.73	908.03	15	53	55	-2
117	912	907.6				

118	911.04	908.19				
119		909.66	12	267	294	-27
114	910.23	906.83				
116	910.62	907.09	15	54	58	-4
127	914.76	911.16				
126	914.85	910.55	12	26	30	-4
126	914.85	910.3				
125	915.07	909.85	15	101	99	2
125	915.07	909.85				
124	915	909.77	15	26	30	-4
124	915	909.73				
123	912.52	908.64	15	171		
123	912.52	908.52				
122	912.55	908.15	15	26	30	-4
122	912.55	907.95				
120	912.73	907.83	18	20	23	3
120	912.73	907.83				
117	912	907.3	18	142	144	2
117	912	907.15				
115	910.38	906.68	21	156	159	3
115	910.38	906.68				
114	910.23	906.63	24	25	26	-1
114	910.23	906.63				
113		906.53	24	63	67	-4

6" SSD Streets:

Sedgewick Ln	1442
Tralee Ct	580
Donegal Cir	567
Sedgewick Culdesac	40
Tralee Culdesac	45
Linclonshire Blvd	665
x2	

Total: 6678

SSD Lots:

Lot 13-14 (8")	625
CA "A" (6")	185
Lot 26 (6")	295

Total: 1105

RCP Pipe Totals:

12	609
15	669
18	669
21	156
24	88

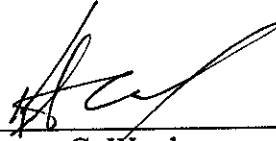
The length of the drain due to the changes described above is now **9974 feet**.

The non-enforcement was approved by the Board at its meeting on January 27, 2003 and recorded under instrument #200300011407.

The bond or letter of credit from Union Planters Bank, number L025530 & L025528 ; dated September 10, 2002; in the amounts of \$111,808.95 for storm sewers & \$35,945.25 for erosion control; was released July 28, 2003.

I recommend the Board approve the drain's construction as complete and acceptable.

Sincerely,

A handwritten signature in black ink, appearing to read 'K. Ward', written over a horizontal line.

Kenton C. Ward,
Hamilton County Surveyor

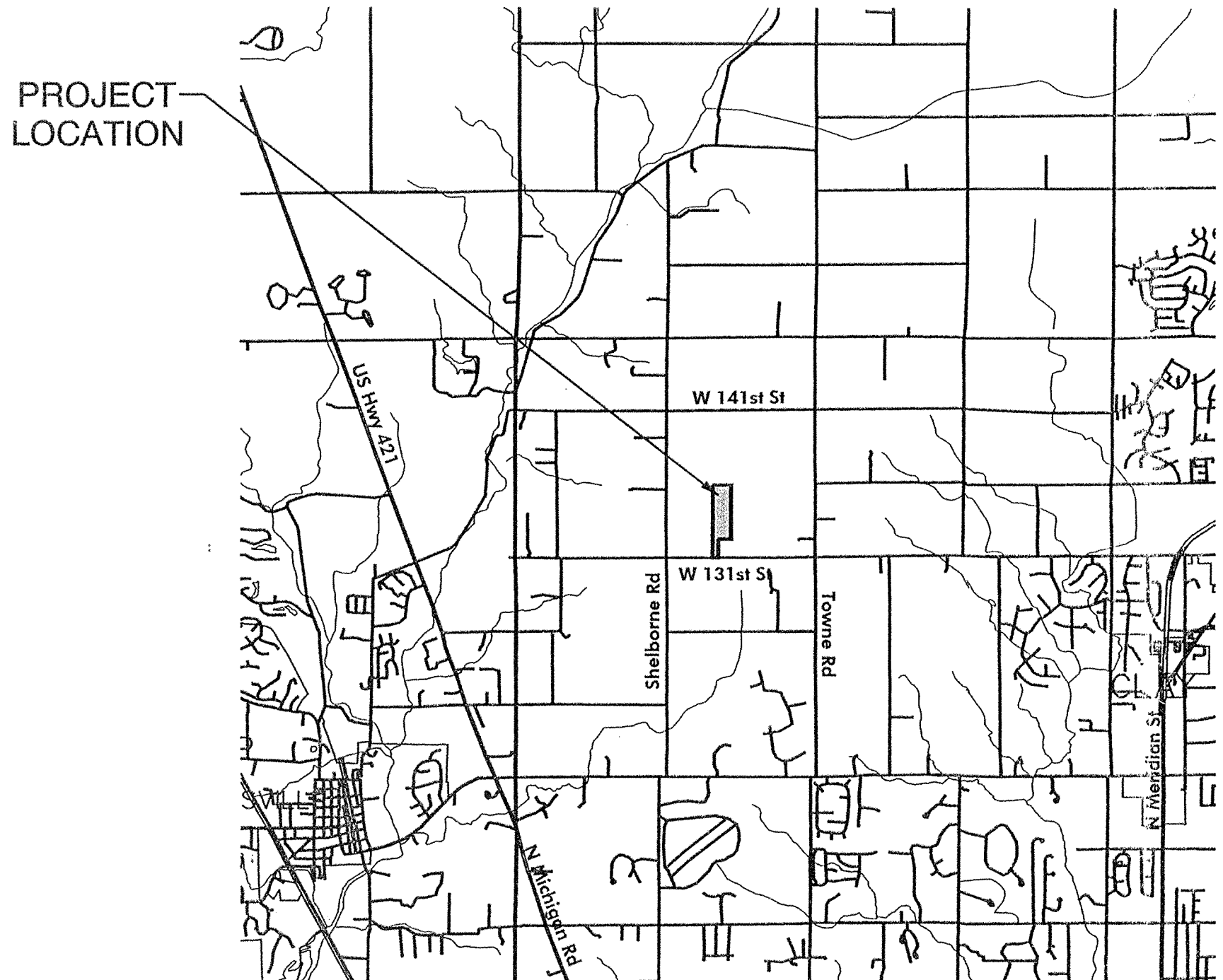
KCW/slm

SEDGWICK

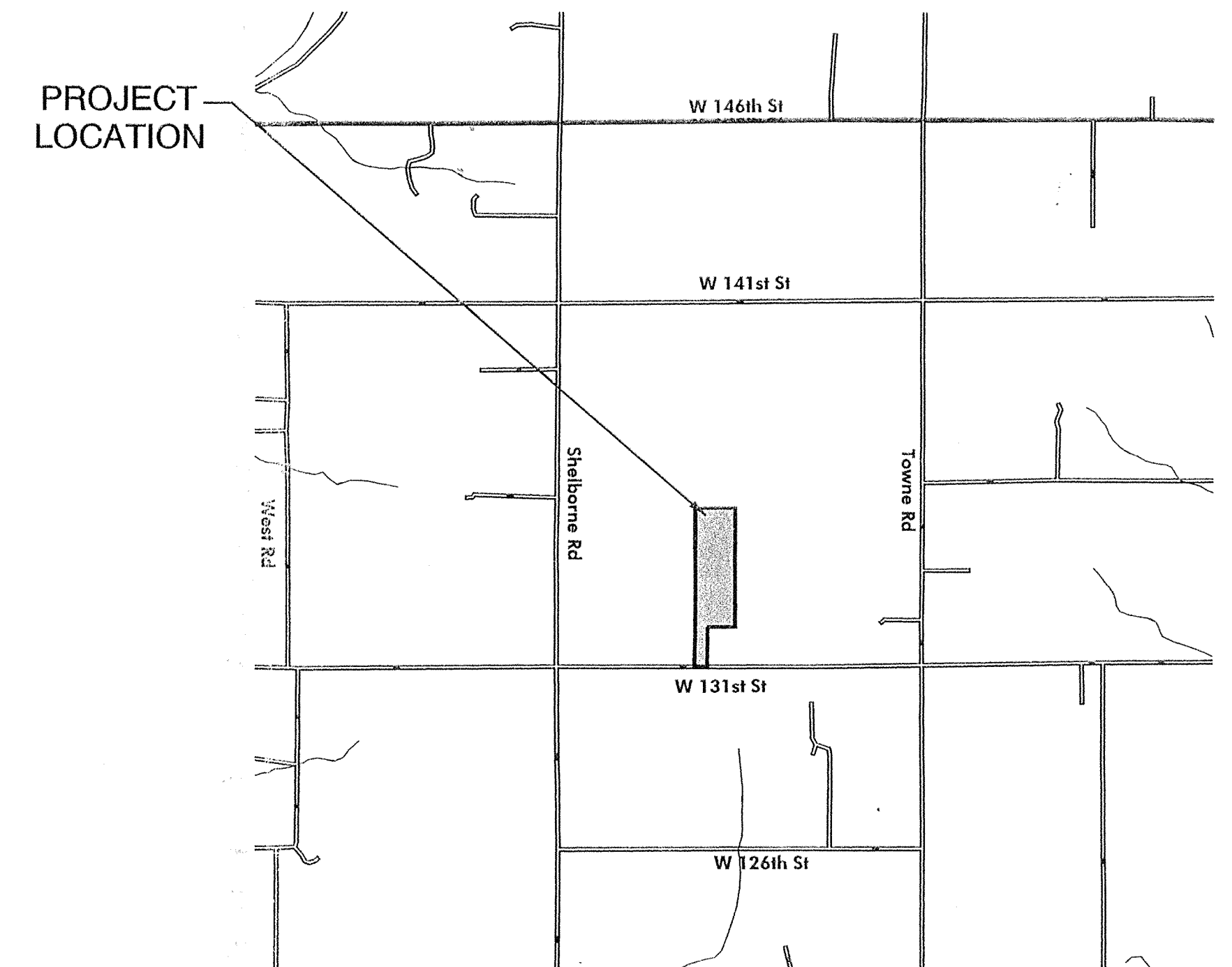
SECTION 29, TOWNSHIP 18N, RANGE 3E, CLAY TOWNSHIP
3030 WEST 131 STREET, HAMILTON COUNTY, CARMEL, INDIANA
ZONED: S-1

RECORD DRAWINGS

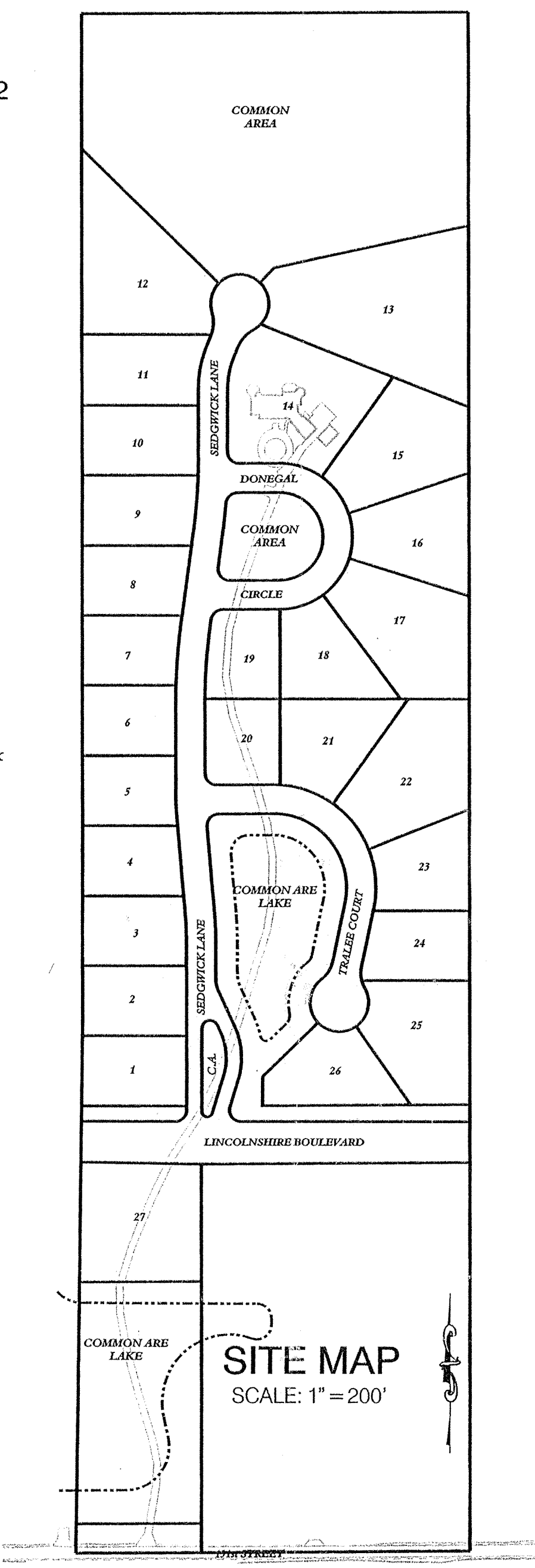
PLANS PREPARED FOR:
GWZ DEVELOPMENT-1, LLC
9011 NORTH MERIDIAN STREET, SUITE 202
INDIANAPOLIS, INDIANA, 46260
PHONE: (317) 573-9301
FAX: (317) 573-9100 FAX
CONTACT: MARK ZUKERMAN



VICINITY MAP
NO SCALE



LOCATION MAP
NO SCALE



SITE MAP
SCALE: 1" = 200'

OPERATING AUTHORITIES

GAS Vectren P.O. Box 1700 Noblesville, IN 46060 (317) 776-5550	CABLE TELEVISION Time Warner Cable 3030 Roosevelt Ave. Indianapolis, IN 46204 (317) 632-9077	WATER City of Carmel Water-Wastewater Utilities 130 First Avenue Carmel, IN 46032 (317) 571-2648 Paul Pace
ELECTRIC Cinergy / PSI 1441 South Guilford Road Carmel, IN 46032 (317) 776-5347 Rick McClain	STREETS Hamilton County Highway Department 1770 South 10th Street Noblesville, Indiana 46060 (317) 773-7770 Steve Broermann	TELEPHONE Ameritech 5858 N. College Avenue Indianapolis, IN 46220 (317) 972-9700 Jeremy Pendleton
SANITARY Clay Township Regional Waste District 10701 North College Avenue, Suite A Indianapolis, Indiana 46240 (317) 844-9200 Jay W. Alley	SCHOOL DISTRICT Carmel / Clay Schools 5201 East 131st Street Carmel, IN 46033 (317) 844-9061 Ron Farrand	

PLANS PREPARED BY:
BANNING ENGINEERING
698 TOWER ROAD, SUITE #100
PLAINFIELD, IN 46168
BUS. (317) 839-2581, FAX (317) 838-9171
E-MAIL banning@banning-eng.com
CONTACT: LANCE G. FERRELL

STREET NAME CHART

LINE	STREET NAME	STREET LENGTH
A	LINCOLNSHIRE BOULEVARD	665.84'
B	SEDGWICK LANE	1445.23'
C	TRALEE COURT	580.50'
D	DONEGAL CIRCLE	563.93'

25 MPH DESIGN SPEED

SHEET INDEX	
SHEET NO	DESCRIPTION
1	TITLE SHEET
-2	EXISTING TOPOGRAPHY
-3	OVERALL AND SIGNAGE
4 & 5	GRADING & DRAINAGE PLAN
-6 - 8	STREET PLAN & PROFILE
-9	ENTRANCE PLAN
-10 & -11	INTERSECTION DETAILS
12	SANITARY SEWER PLAN
13 & 14	SANITARY SEWER PLAN & PROFILE
15 & 16	STORM SEWER PLAN & PROFILE
-17 & -18	WATER MAIN PLAN
-19	WATER MAIN DETAILS
-20 & -21	EROSION & SEDIMENT CONTROL PLAN
-22	EROSION CONTROL DETAILS
-23	SPECIFICATIONS
-24	SANITARY SEWER DETAILS
-25	STORM SEWER DETAILS
-26	MISCELLANEOUS DETAILS

REVISIONS	
DATE	DESCRIPTION
07-05-02	PER AGENCY COMMENT LETTERS
08-14-02	REVISED PER HAMILTON COUNTY SURVEYOR & NRCS COMMENT LETTERS
09-06-02	REVISED PER HAMILTON COUNTY SURVEYOR
09-17-02	REVISED PER STEVE CASH
09-27-02	REVISED PER MEETING W/STEVE CASH

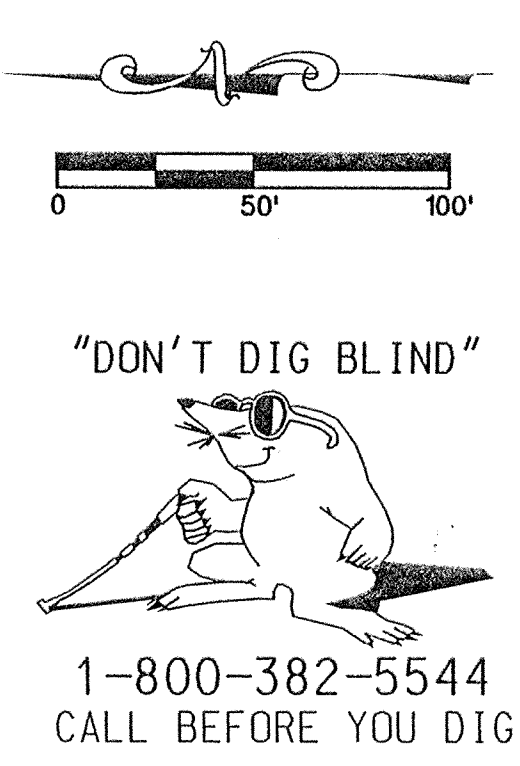
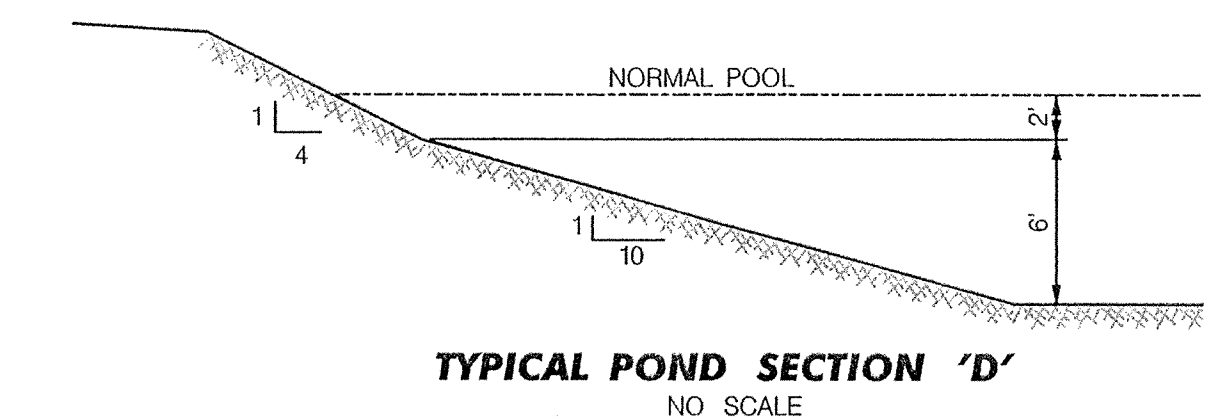
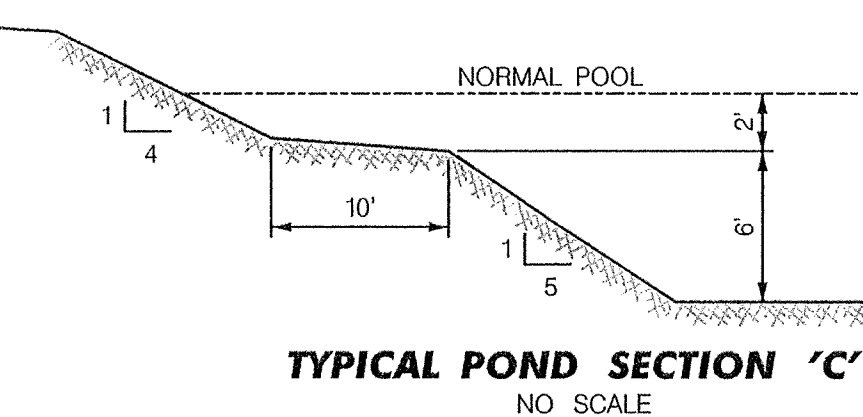
Certificate of Survey
I hereby state that the record information provided herein is true and correct to the best of my knowledge and belief and was collected under my supervision with the field data completed on January 10, 2003. The record information pertains to the location and elevation of the storm and sanitary sewer structures, the size and type of the sewer pipes, and the slope of said pipes between structures. The elevations on top of casting of the structures and their accompanying pipe inverts are accurate to within 0.05 feet and were gathered using an auto-level applying standard leveling techniques. The record locations of the sanitary sewer laterals were provided as placed by those responsible for construction of said sewer and are subject to the accuracy of the measurements provided.

Brian L. Haggard 01/10/03
Brian L. Haggard
Registered Land Surveyor - LS29800001
State of Indiana



GENERAL NOTES

- Standard Specifications
 - The Hamilton County Specs shall apply for Storm Sewer
 - The Indianapolis Water Company Specs shall apply for Watermains
 - The Clay Township Waste Water District specs shall apply for Sanitary Sewers.
- It shall be the responsibility of each contractor to verify existing utility and conditions. It shall also be the contractor's responsibility to contact the various utilities for proper staking locations for each prior to construction.
- Any errors or omissions shall be brought to the attention of the engineer prior to construction. In the event of the contractor's failing to give such notice, he shall be held responsible for the results of any such errors or omissions and the cost of rectifying the same.
- Any parts of the sanitary or storm sewer trench which lies under paved areas shall be back filled with granular material as shown in the details.
- All grades at the boundary line shall meet existing grade.
- All construction activity on this site shall be performed in compliance with OSHA standards.
- Rip-Rap required on all end section outfall pipes. See Erosion Control Plan for exact size and location.
- All streets are required to have 6" underdrains per the governing agencies Standards
- Contractor to stockpile topsoil at a location approved by the developer & engineer prior to construction.
- Any area of construction where field tiles cross the proposed house pad shall be removed and back filled. All field tiles intercepted shall be perpetuated into the storm sewer system or lakes. The contractor shall notify the engineer in any circumstance that this cannot be accomplished.
- All fill areas shall be compacted to meet the density of the specification sheet or detail.
- Existing septic field to be abandoned per Indiana State Board of Health requirements.
- Existing well to be abandoned per Indiana state Board of Health requirements.
- Decorative signs, sprinkler systems, trees, landscaping mounds, light poles or other such amenities are not permitted in the right of way.



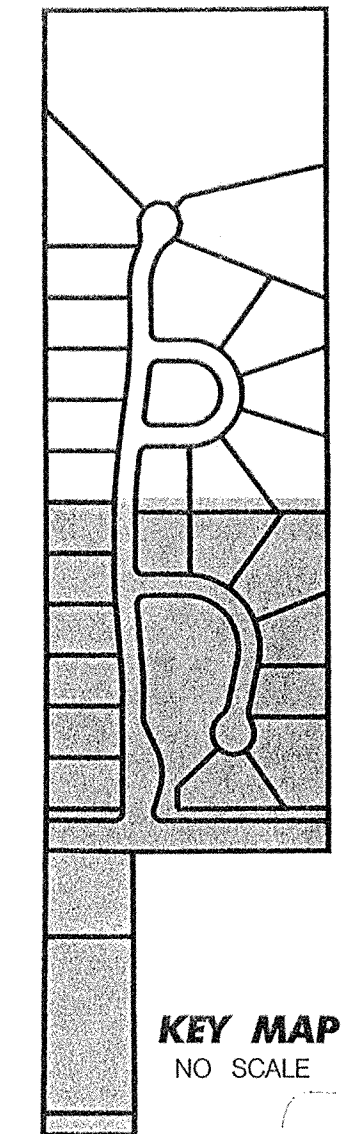
1-800-382-5544
CALL BEFORE YOU DIG

RECORD DRAWING

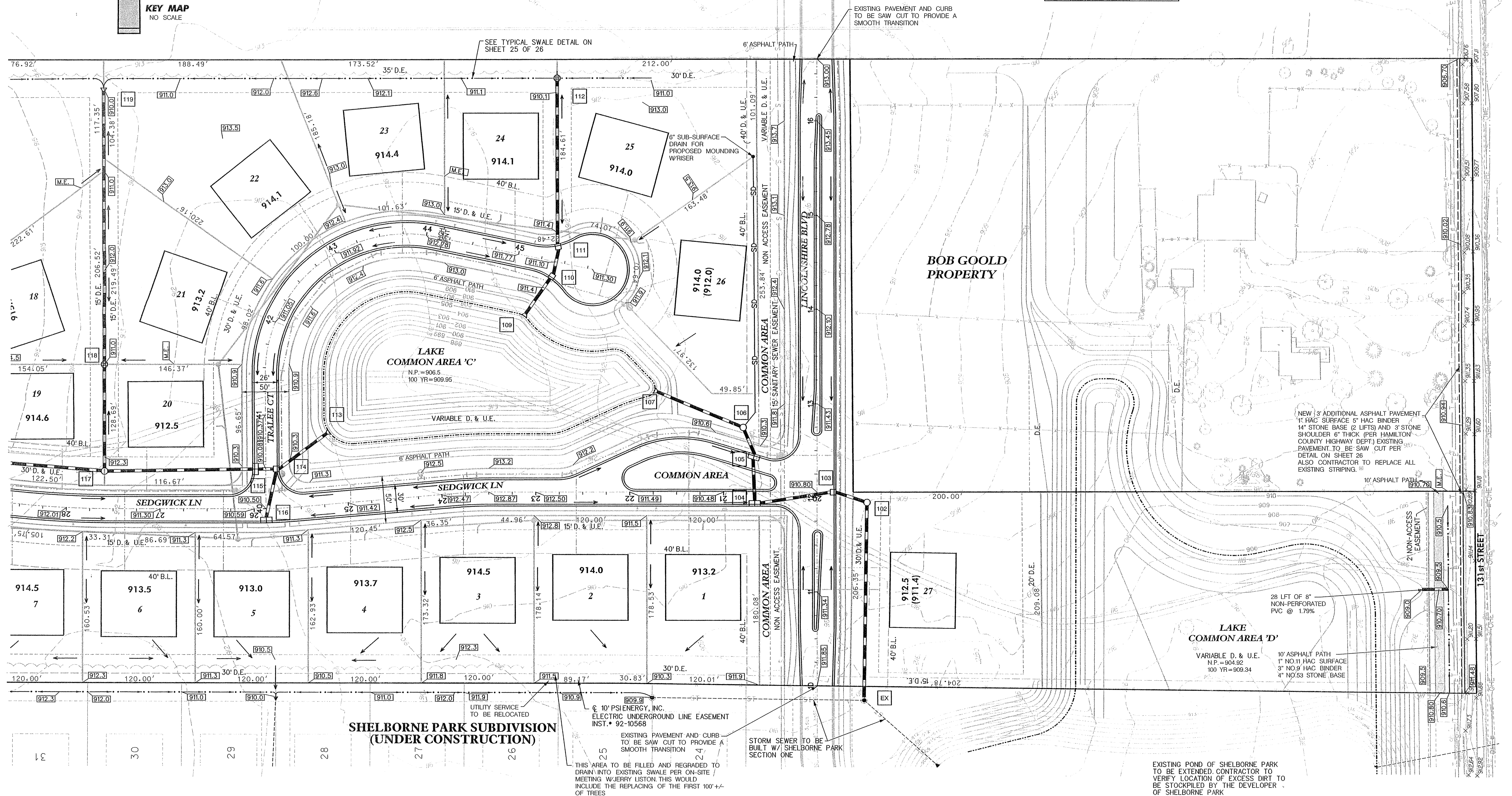
FOR STORM STRUCTURE CHART
SEE SHEET 24 OF 26

STREET NAME CHART

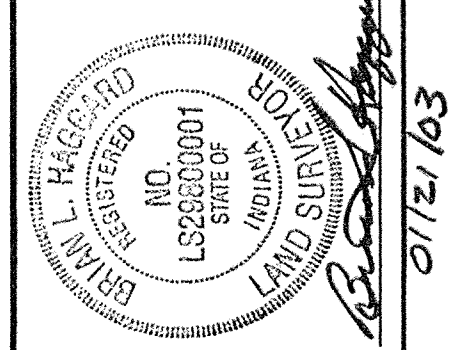
LINE	STREET NAME
A	LINCOLNSHIRE BOULEVARD
B	SEDGWICK LANE
C	TRALEE COURT
D	DONEGAL CIRCLE



THE LAKES AT HAYDEN RUN SUBDIVISION (UNDER CONSTRUCTION)



GRADING AND DRAINAGE PLAN
SEDGWICK
HAMILTON COUNTY
CARMEL, INDIANA



BANNING ENGINEERING
 698 TOWER ROAD, SUITE #100
 BUS. (317) 839-2581, FAX (317) 838-9171
 E-MAIL banning@banning-eng.com

Project No: 02022
Sheet No: 4 of 26

GENERAL NOTES

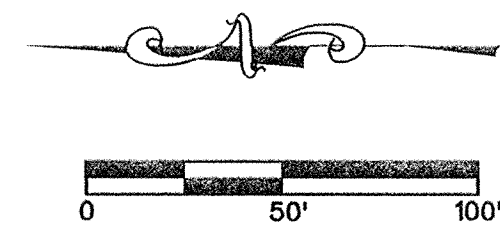
- Standard Specifications
 - The Hamilton County Specs. shall apply for Storm Sewer
 - The Indianapolis Water Company Specs. shall apply for Watermains
 - The Clay Township Waste Water District specs. shall apply for Sanitary Sewers.
- It shall be the responsibility of each contractor to verify existing utility and conditions. It shall also be the contractor's responsibility to contact the various utilities for proper staking locations for each prior to construction.
- Any errors or omissions shall be brought to the attention of the engineer prior to construction, in the event of the contractor's failing to give such notice, he shall be held responsible for the results of any such errors or omissions and the cost of rectifying the same.
- Any parts of the sanitary or storm sewer trench which lies under paved areas shall be back filled with granular material as shown in the details.
- All grades at the boundary line shall meet existing grade.
- All construction activity on this site shall be performed in compliance with OSHA standards.
- Rip-Rap required on all end section outfall pipes. See Erosion Control Plan for exact size and location.
- All streets are required to have 6" underdrains per the governing agencies Standards
- Contractor to stockpile topsoil at a location approved by the developer & engineer prior to construction.
- Any area of construction where field tiles cross the proposed house pad shall be removed and back filled. All field tiles intercepted shall be perpetuated into the storm sewer system or lakes. The contractor shall notify the engineer in any circumstance that this cannot be accomplished.
- All fill areas shall be compacted to meet the density of the specification sheet or detail.
- Existing septic field to be abandoned per Indiana State Board of Health requirements.
- Existing well to be abandoned per Indiana state Board of Health requirements.
- Decorative signs, sprinkler systems, trees, landscaping mounds, light poles or other such amenities are not permitted in the right of way.

FOR STORM STRUCTURE CHART
SEE SHEET 24 OF 26

RECORD DRAWING

STREET NAME CHART

LINE	STREET NAME
A	LINCOLNSHIRE BOULEVARD
B	SEDGWICK LANE
C	TRALEE COURT
D	DONEGAL CIRCLE



LEGEND

EXISTING

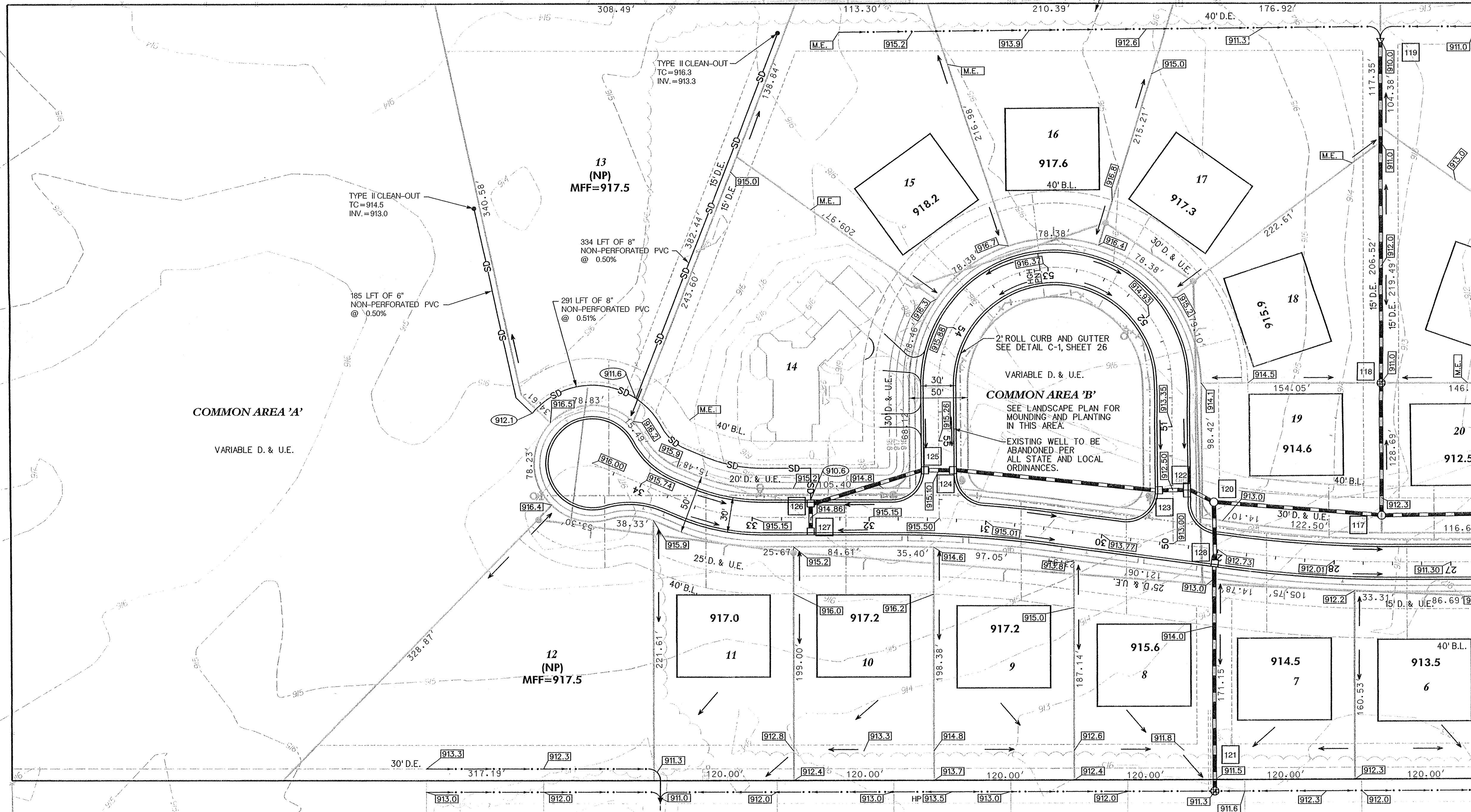
- ===== STORM SEWER
- SANITARY SEWER
- WATER LINE
- X-X- FENCE LINE
- GAS LINE
- OHE OVERHEAD UTILITIES
- MANHOLE
- ⊕ STORM INLET
- ⊕ FIRE HYDRANT
- ⊕ WATER VALVE
- ⊕ ELECTRIC TRANSFORMER
- ⊕ CATV OR TELEPHONE PEDESTAL

PROPOSED

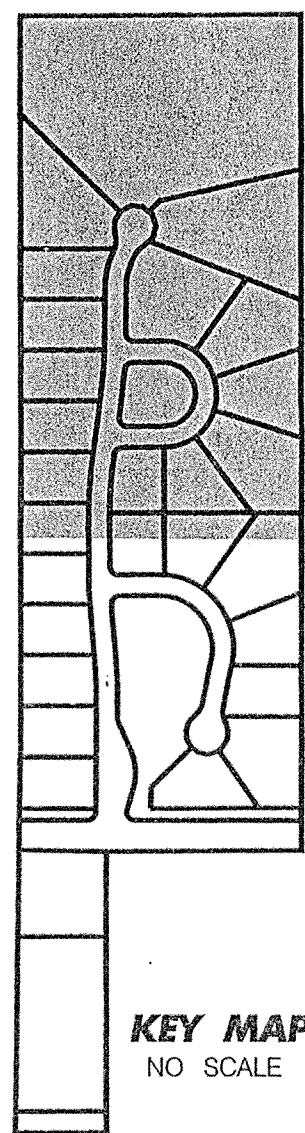
- ===== STORM SEWER
- SANITARY SEWER
- WATER LINE
- SD SUB-SURFACE DRAIN
- SANITARY MH
- STORM MH
- ⊕ STORM INLET
- ⊕ SANITARY STRUCTURE NO.
- ⊕ STORM STRUCTURE NO.
- ⊕ BUILDING PAD
- ⊕ LOT NUMBER
- ⊕ FLOOD PROTECTION GRADE
- ⊕ PAD ELEVATION
- (NP) NO PAD
- MFF MINIMUM FINISH FLOOR
- 910.2 SUB-DRAIN INVERT

THE RIDGE AT HAYDEN RUN SUBDIVISION
(UNDER CONSTRUCTION)

THE LAKES AT HAYDEN RUN SUBDIVISION
(UNDER CONSTRUCTION)



SHELBORNE PARK SUBDIVISION
(UNDER CONSTRUCTION)



1-800-382-5544
CALL BEFORE YOU DIG

Date	Revisions
07-05-02	PER AGENCY COMMENT LETTERS
08-14-02	PER HAMILTON CNTY. SURVEYOR & NRCS
08-09-02	PER HAMILTON COUNTY SURVEYOR
08-17-02	REVISED PER STEVE CASH
08-27-02	PER MEETING W/STEVE CASH

Designed: LCF
Drawn: SJH
Checked: JAB
Scale: 1"=50'
Date: 06-21-02

GRADING AND DRAINAGE PLAN
SEDGWICK
HAMILTON COUNTY
CARMEL, INDIANA

BRUCE L. HAGERDORN
REGISTERED
LAND SURVEYOR
INDIANAPOLIS, IN
LIC#200001
516 E. 10TH ST.
CARMEL, IN 46032

BANNING
ENGINEERING

698 TOWER ROAD, SUITE #100
PLAINFIELD, IN 46168
BUS. (317) 839-2581, FAX (317) 838-9171
E-MAIL banning@banning-eng.com

SANITARY SEWER GENERAL NOTES

1. It shall be the contractor's responsibility to field verify all utility locations before construction begins.
2. All construction activity on this site is to be performed in compliance with OSHA standards.
3. Wye and laterals are stationed off of the street centerline stationing.
4. All wye connections shall have a minimum of five foot extension connected to the wye, or extended to the utility and drainage easement of the lot (whichever is greater). The end of the lateral shall be plugged or capped.
5. Laterals to the opposite side of the roadway shall be extended to the utility and drainage easement of the lot.
6. All sanitary sewer laterals that cross the street must be backfilled with full depth granular backfill.

NOTE: THERE IS TO BE A MINIMUM OF 10 FEET HORIZONTAL SEPARATION & 18 INCHES VERTICAL SEPARATION BETWEEN THE SANITARY SEWER AND WATER LINE

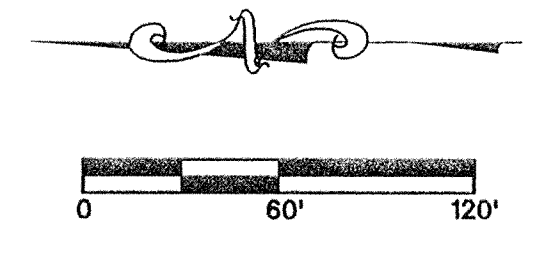
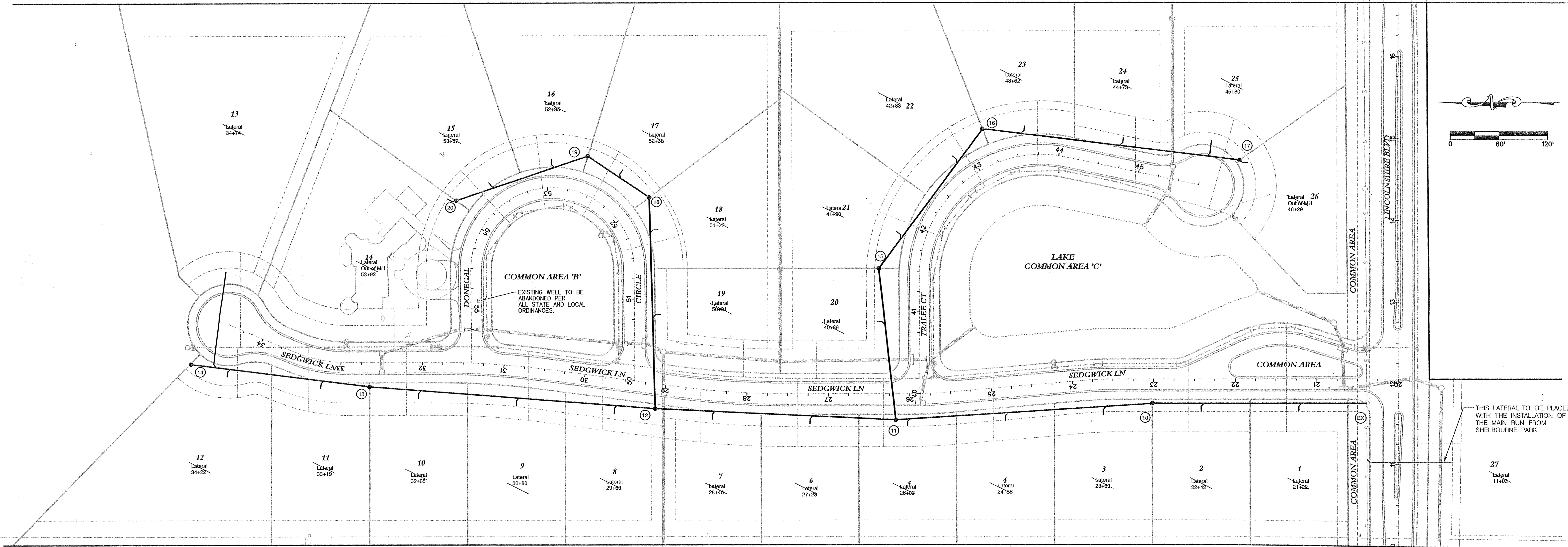
NOTE: ALL SANITARY SEWER MAIN LINES SHALL BE SDR 35 P.V.C. PIPE

NOTE: ALL CASTINGS SHALL BE TO CLAY TOWNSHIP WASTE WATER DISTRICT SPECIFICATIONS.

NOTE: CONTRACTOR TO FIELD VERIFY LOCATION OF EXISTING SEPTIC SYSTEM ON LOT 14 AND TO REMOVE AND DISMANTLE PER LOCAL AND STATE CODES

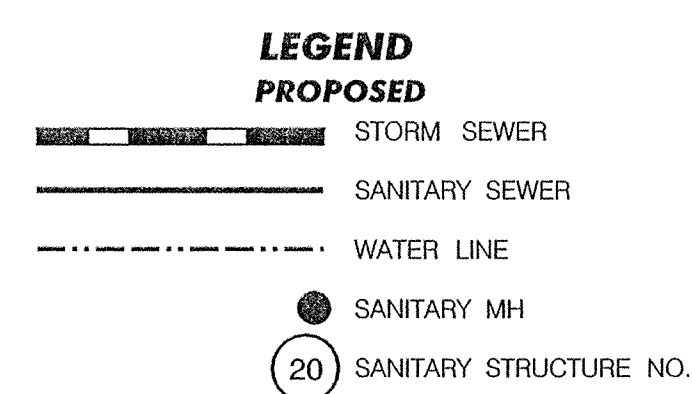
RECORD DRAWING

HAYDEN RUN SUBDIVISION



STREET NAME CHART

LINE	STREET NAME
A	LINCOLNSHIRE BOULEVARD
B	SEDGWICK LANE
C	TRALEE COURT
D	DONEGAL CIRCLE



LOT #	DISTANCE TO DOWN STREAM MANHOLE	DOWN STREAM MANHOLE STR. #
1	87	EX
2	209	EX
3	63	10
4	131	10
5	302	10
6	105	11
7	224	11
8	52	12
9	162	12
10	291	12
11	60	13
12	175	13
13	193	13
14	0	20
15	142	19
16	42	19
17	48	18
18	109	12
19	111	12
20	118	11
21	49	15
22	162	15
23	51	16
24	176	16
25	282	16
26	0	17

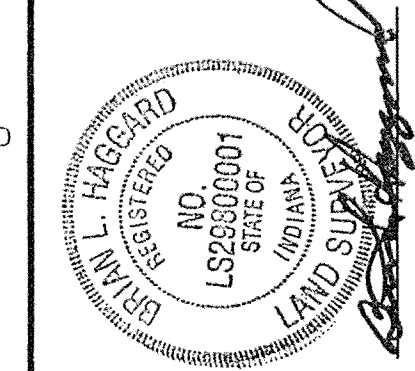
EXISTING SANITARY SEWER MAIN (UNDER CONSTRUCTION W/ SHELBOURNE PARK AND HAYDEN RUN SUBDIVISIONS)

THIS LATERAL TO BE PLACED WITH THE INSTALLATION OF THE MAIN RUN FROM SHELBOURNE PARK

Sym.	Revisions	Date
PER AGENCY COMMENT LETTERS		07-05-02
PER HAMILTON COUNTY SURVEYOR & NRCS		08-14-02

Designed:	Drawn:	Checked:	Scale:	Date:
LGF	SIH	JAB	1"=60'	06-21-02

SANITARY SEWER PLAN
 SEDGWICK
 HAMILTON COUNTY
 CARMEL, INDIANA



BANNING ENGINEERING
 698 TOWER ROAD, SUITE #100
 PLAINFIELD, IN 46168
 BUS. (317) 839-2581, FAX (317) 838-9171
 E-MAIL banning@banning-eng.com

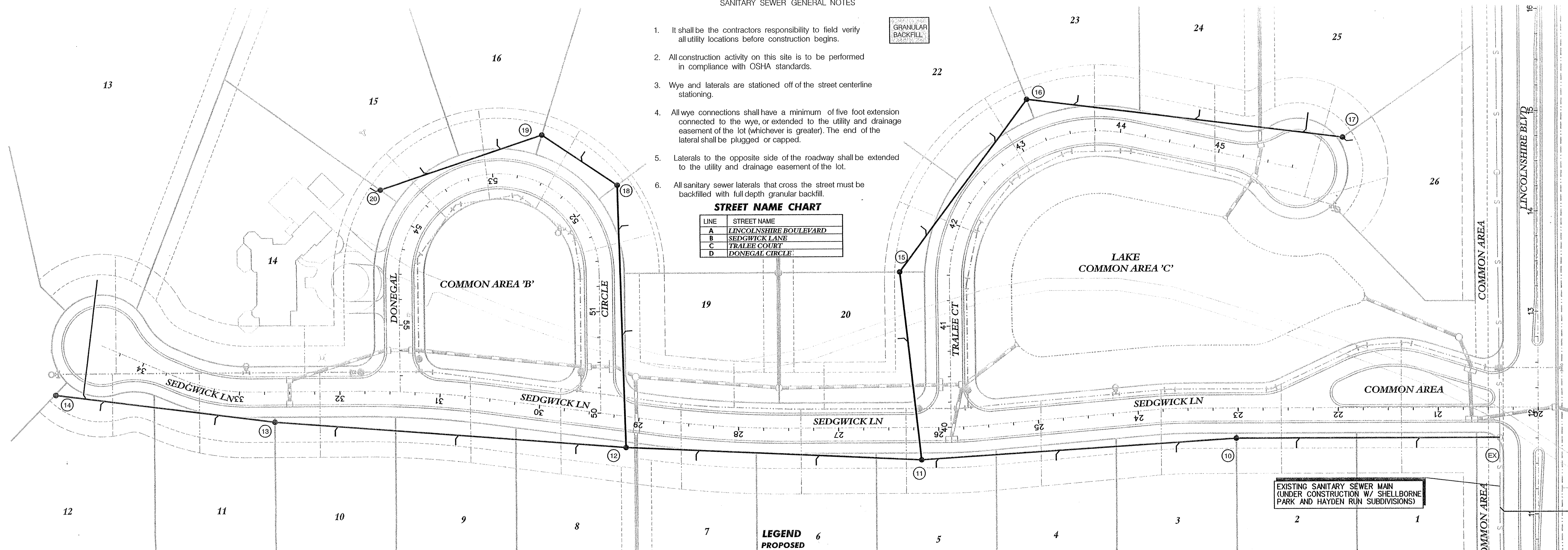
Project No: 02022
 Sheet No:

1. It shall be the contractors responsibility to field verify all utility locations before construction begins.
2. All construction activity on this site is to be performed in compliance with OSHA standards.
3. Wye and laterals are stationed off of the street centerline stationing.
4. All wye connections shall have a minimum of five foot extension connected to the wye, or extended to the utility and drainage easement of the lot (whichever is greater). The end of the lateral shall be plugged or capped.
5. Laterals to the opposite side of the roadway shall be extended to the utility and drainage easement of the lot.
6. All sanitary sewer laterals that cross the street must be backfilled with full depth granular backfill.



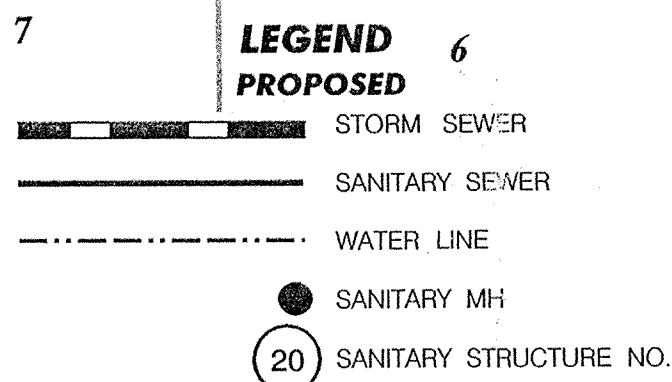
STREET NAME CHART

LINE	STREET NAME
A	LINCOLNSHIRE BOULEVARD
B	SEDGWICK LANE
C	TRALEE COURT
D	DONEGAL CIRCLE



NOTE: ALL CASTINGS SHALL BE TO CONTROLLING JURISDICTIONAL AGENCIES SPECIFICATIONS.

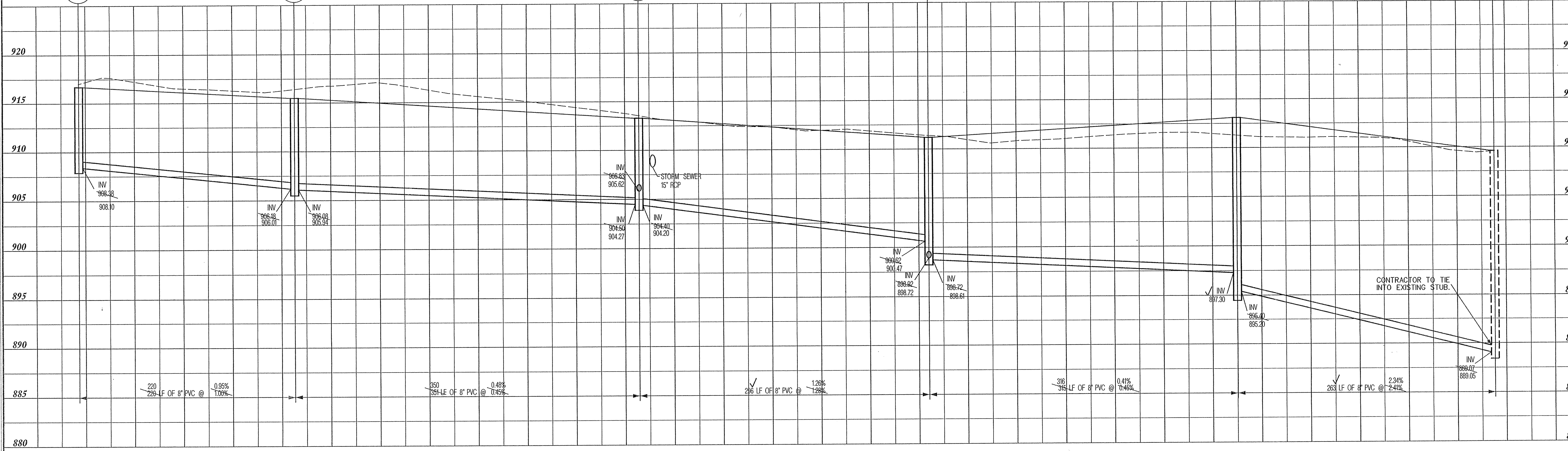
NOTE: ALL SANITARY SEWER MAIN LINES SHALL BE SDR 35 P.V.C. PIPE



RECORD DRAWING

NOTE: THERE IS TO BE A MINIMUM OF 10 FEET HORIZONTAL SEPARATION & 18 INCHES VERTICAL SEPARATION BETWEEN THE SANITARY SEWER AND WATER LINE

SCALE:
1"=5' VERT.
1"=50' HOR.



PLAN & PROFILE STRUCTURES

Date	07-05-02
Revisions	PER AGENCY COMMENT LETTERS
Drawn	SJH
Checked	JAB
Scale	AS SHOWN
Date	06-21-02

SANITARY SEWER PLAN & PROFILE
SEDGWICK
HAMILTON COUNTY
CARMEL, INDIANA

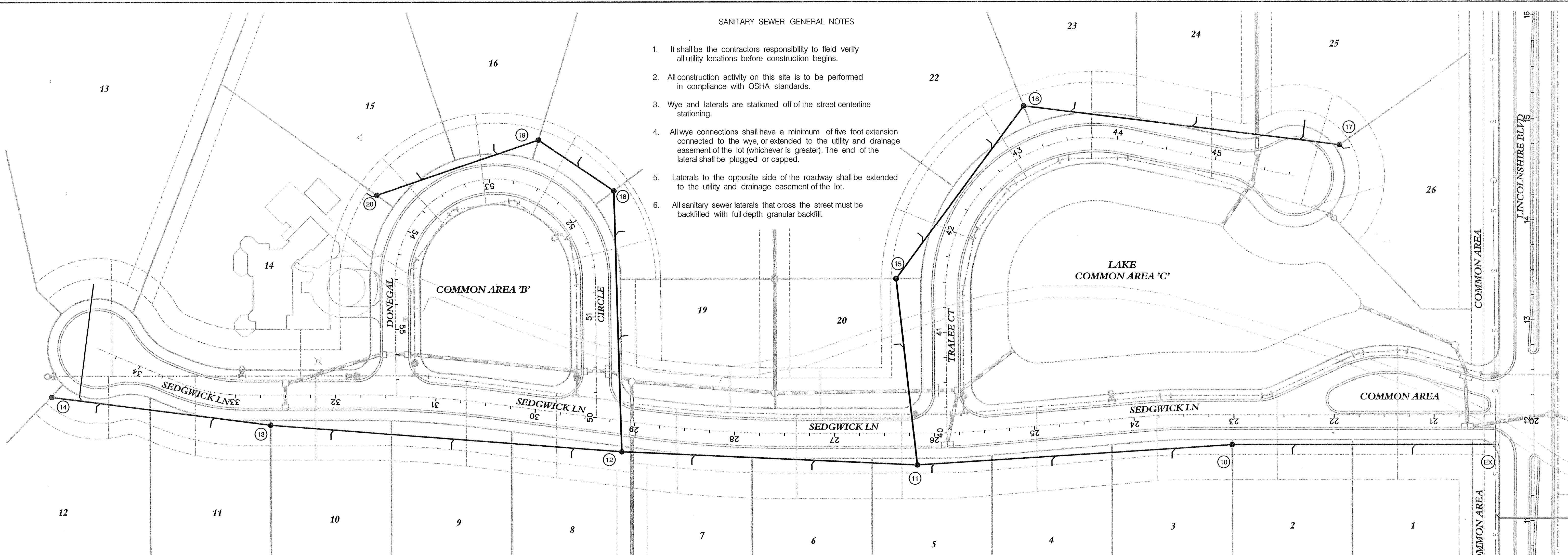
BANNING ENGINEERING
 698 TOWER ROAD, SUITE #100
 PLAINFIELD, IN 46168
 BUS. (317) 839-2581, FAX (317) 838-9171
 E-MAIL banning@banning-eng.com

Project No: 02022
 Sheet No: 880

13 of 26

SANITARY SEWER GENERAL NOTES

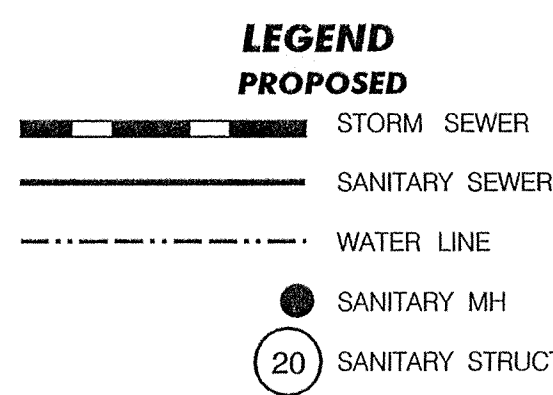
1. It shall be the contractor's responsibility to field verify all utility locations before construction begins.
2. All construction activity on this site is to be performed in compliance with OSHA standards.
3. Wye and laterals are stationed off of the street centerline stationing.
4. All wye connections shall have a minimum of five foot extension connected to the wye, or extended to the utility and drainage easement of the lot (whichever is greater). The end of the lateral shall be plugged or capped.
5. Laterals to the opposite side of the roadway shall be extended to the utility and drainage easement of the lot.
6. All sanitary sewer laterals that cross the street must be backfilled with full depth granular backfill.



RECORD DRAWING

NOTE: ALL CASTINGS SHALL BE TO CONTROLLING JURISDICTIONAL AGENCIES SPECIFICATIONS.

NOTE: ALL SANITARY SEWER MAIN LINES SHALL BE SDR 35 P.V.C. PIPE



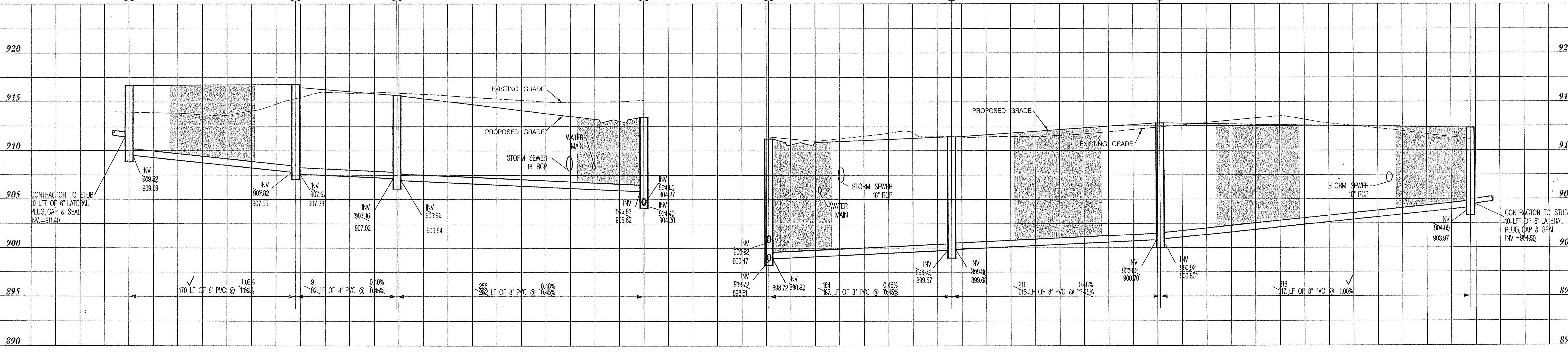
NOTE: THERE IS TO BE A MINIMUM OF 10 FEET HORIZONTAL SEPARATION & 18 INCHES VERTICAL SEPARATION BETWEEN THE SANITARY SEWER AND WATER LINE

STREET NAME CHART

LINE	STREET NAME
A	LINCOLNSHIRE BOULEVARD
B	SEDGWICK LANE
C	TRALEE COURT
D	DONEGAL CIRCLE

SCALE:
 1"=5' VERT.
 1"=50' HOR.

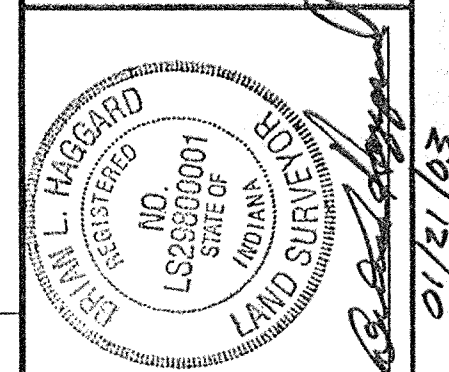
Structure No.	TC	San. Manhole
20	916.86	TC - 916.70
19	917.11	TC - 916.80
18	915.62	TC - 915.70
12	913.20	TC - 913.30
11	911.31	TC - 911.30
15	911.63	TC - 911.40
16	913.11	TC - 912.80
17	912.72	TC - 912.20



PLAN & PROFILE STRUCTURES

Date	Revisions
08-14-92	PER HAMILTON CNTY SURVEYOR & NRCS

SANITARY SEWER PLAN & PROFILE
SEDGWICK
 HAMILTON COUNTY
 CARMEL, INDIANA



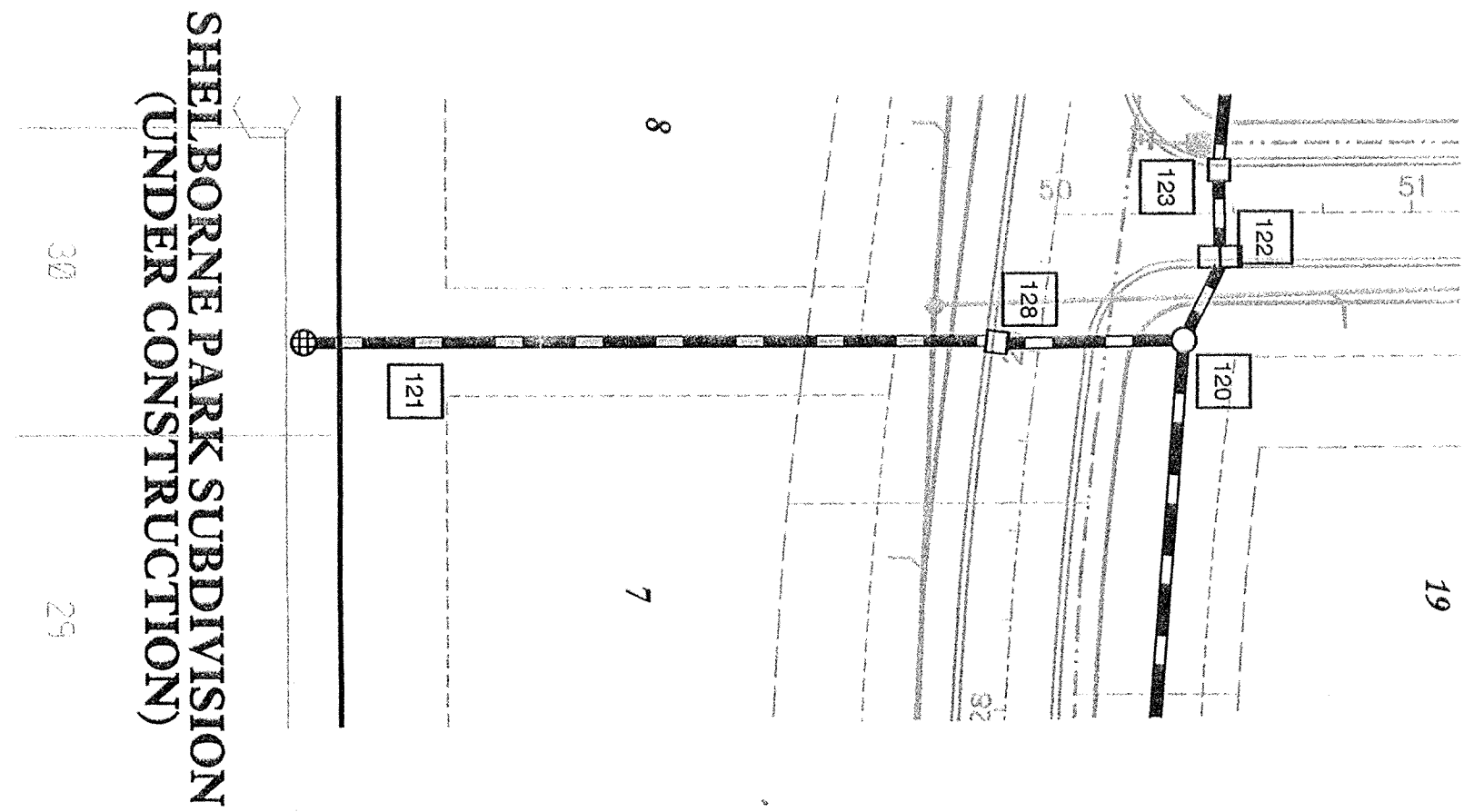
BANNING ENGINEERING
 698 TOWER ROAD, SUITE #100
 PLAINFIELD, IN 46168
 BLS. (317) 839-2581, FAX (317) 838-9171
 E-MAIL banning@banning-eng.com

Project No: 02022
 Sheet No:

...02022\sec\rd\02022sadr.dgn 01/21/2003 02:05:41 PM
 This copy printed from the Digital Archive of the Hamilton County Surveyor's Office, One Hamilton Co. Square, Ste. 188, Noblesville, IN 46060

RECORD DRAWING

SCALE:
1" = 5' VERT.
1" = 50' HOR.



HAMILTON COUNTY INDIANA

This information was submitted for input into the Hamilton County Geographical Information System. This document is considered an official record of the GIS.

Entry Date: 10-21-03

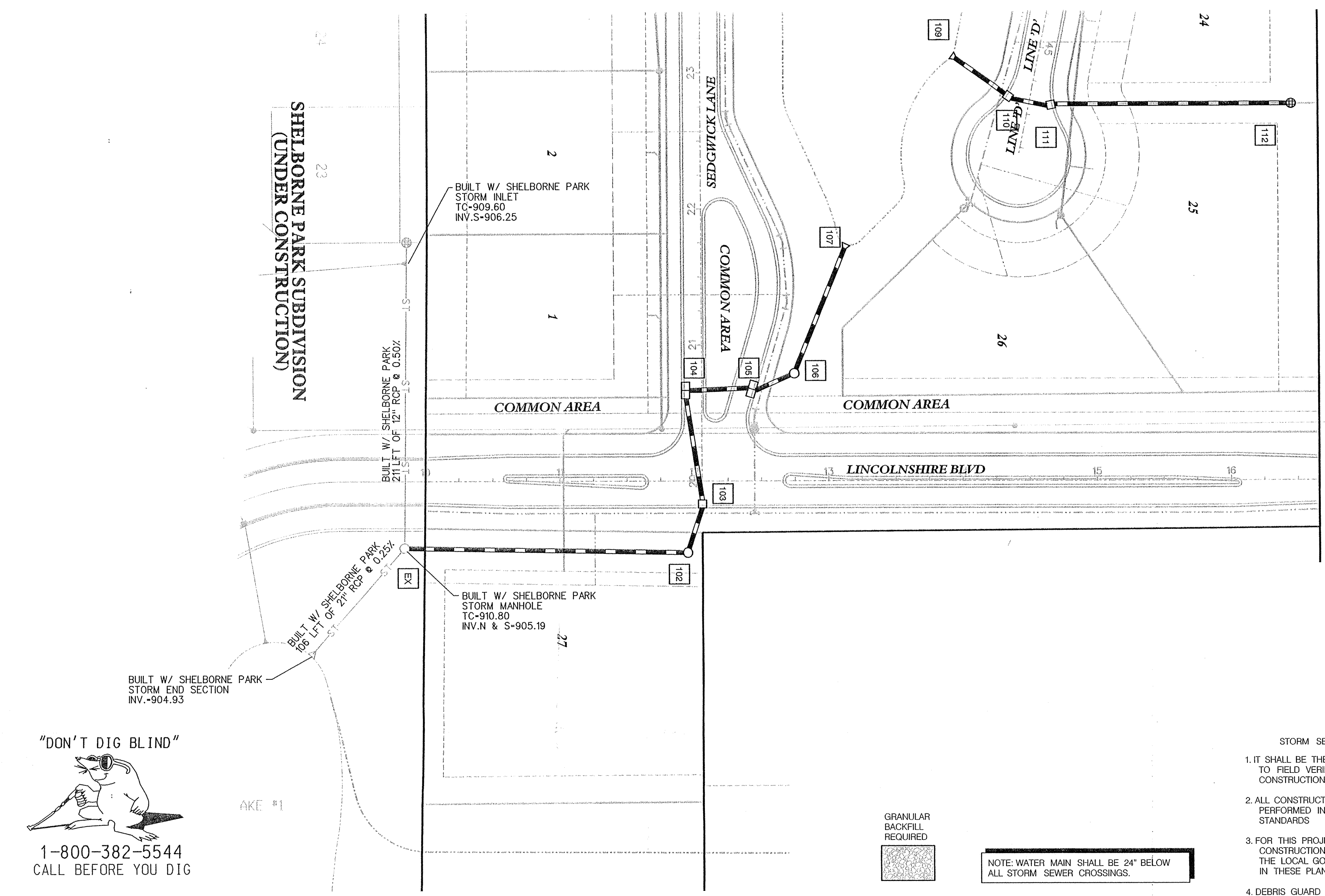
Entered by: JDH

STREET NAME CHART

LINE	STREET NAME
A	LINCOLNSHIRE BOULEVARD
B	SEDGWICK LANE
C	TRALEE COURT
D	DONEGAL CIRCLE

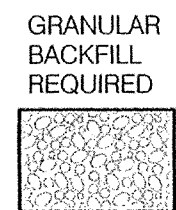
THE LAKES AT HAYDEN
RUN SUBDIVISION
(UNDER CONSTRUCTION)

SHELBORNE PARK SUBDIVISION
(UNDER CONSTRUCTION)



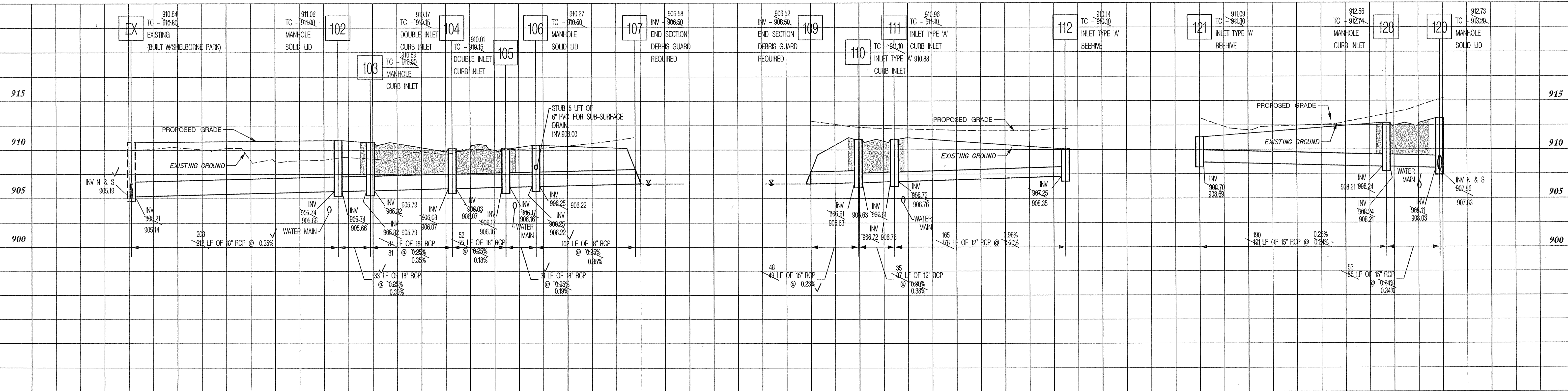
- STORM SEWER GENERAL NOTES
- IT SHALL BE THE CONTRACTOR'S RESPONSIBILITY TO FIELD VERIFY ALL UTILITY LOCATIONS BEFORE CONSTRUCTION BEGINS.
 - ALL CONSTRUCTION ACTIVITY ON THIS SITE TO BE PERFORMED IN COMPLIANCE WITH APPLICABLE O.S.H.A. STANDARDS.
 - FOR THIS PROJECT ALL CASTING TYPES AND STORM SEWER CONSTRUCTION IS TO BE CONSTRUCTED IN COMPLIANCE WITH THE LOCAL GOVERNING AGENCY, IF NOT NOTED OTHERWISE IN THESE PLANS.
 - DEBRIS GUARD TO BE INSTALLED AT ALL OPEN ENDED INLET (UPSTREAM END)

NOTE: WATER MAIN SHALL BE 24" BELOW ALL STORM SEWER CROSSINGS.



"DON'T DIG BLIND"

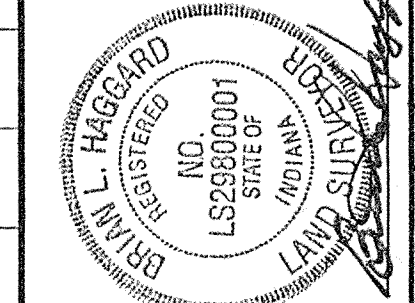
1-800-382-5544
CALL BEFORE YOU DIG



PLAN & PROFILE STRUCTURES

Date	Revisions	Sym.	Designed:	Drawn:	Checked:	Scale:	Date:
08-14-02	PER HAMILTON CNTY SURVEYOR & NRCS	LG	JAG	JAG	JAG	AS SHOWN	06-21-02
09-06-02	PER HAMILTON COUNTY SURVEYOR						

STORM SEWER PLAN & PROFILE
SEDGWICK
HAMILTON COUNTY
CARMEL, INDIANA



BANNING ENGINEERING

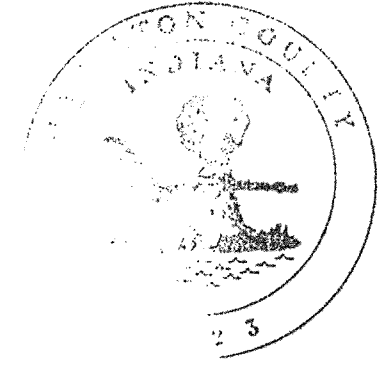
698 TOWER ROAD, SUITE #100
PLAINFIELD, IN 46168
BUS. (317) 839-2581, FAX (317) 838-9171
E-MAIL banning@banning-eng.com

Project No: 02022
Sheet No:

RECORD DRAWING



SCALE:
1"=5' VERT.
1"=50' HOR.



This information was gathered for input into the Hamilton County Geographical Information System. This document is considered an official record of the GIS.

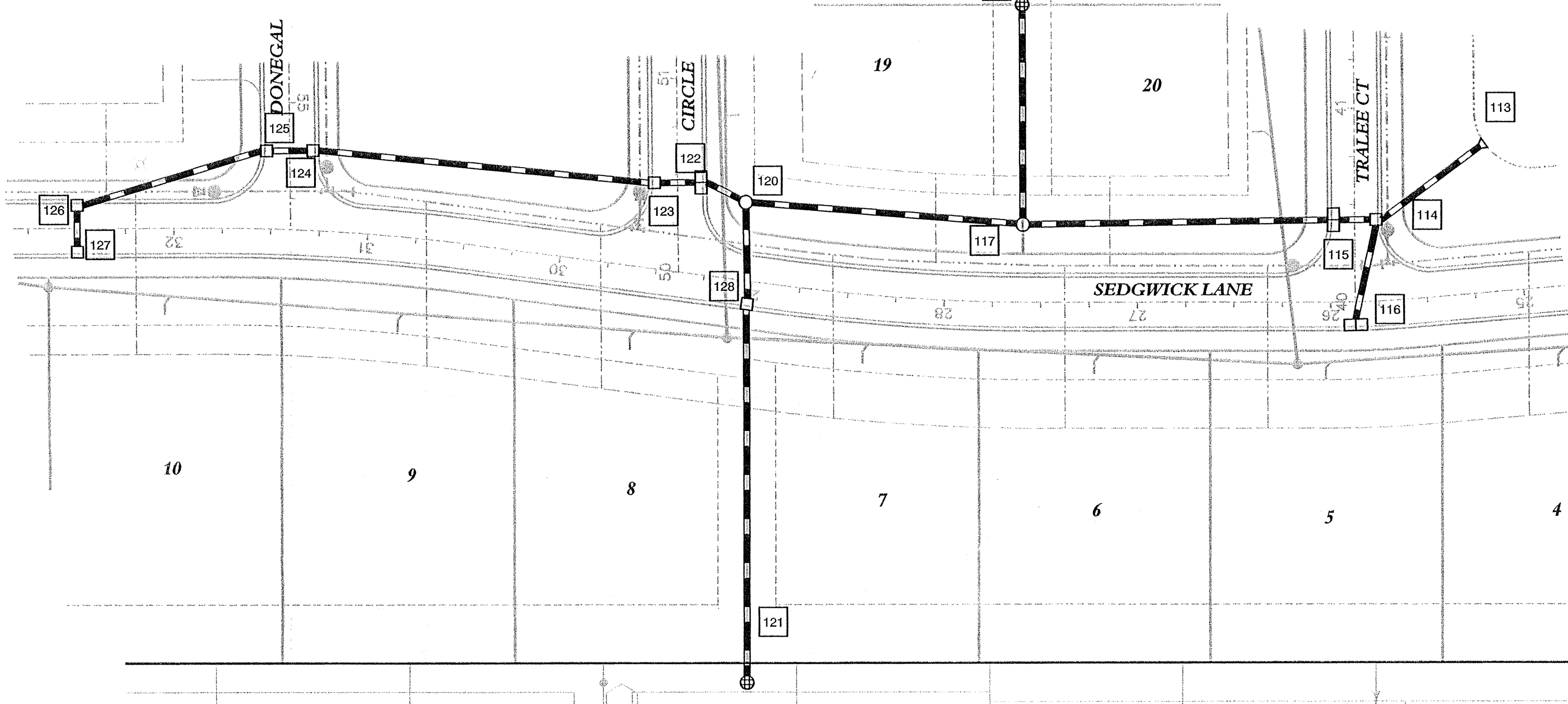
Entry Date: 10-21-03

Entered by: JDH

Revisions	Date
PER HAMILTON COUNTY SURVEYOR & NRCS	08-14-02
PER HAMILTON COUNTY SURVEYOR	09-06-02
PER MEETING W/STEVE CASH	09-27-02

Designed:	Drawn:	Checked:	Scale:	Date:
LCF	SIH	JAB	AS SHOWN	06-21-02

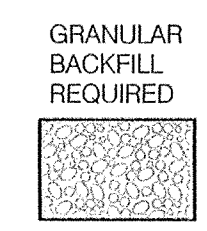
- STORM SEWER GENERAL NOTES**
- IT SHALL BE THE CONTRACTOR'S RESPONSIBILITY TO FIELD VERIFY ALL UTILITY LOCATIONS BEFORE CONSTRUCTION BEGINS.
 - ALL CONSTRUCTION ACTIVITY ON THIS SITE TO BE PERFORMED IN COMPLIANCE WITH APPLICABLE O.S.H.A. STANDARDS
 - FOR THIS PROJECT ALL CASTING TYPES AND STORM SEWER CONSTRUCTION IS TO BE CONSTRUCTED IN COMPLIANCE WITH THE LOCAL GOVERNING AGENCY, IF NOT NOTED OTHERWISE IN THESE PLANS.
 - DEBRIS GUARD TO BE INSTALLED AT ALL OPEN ENDED INLET (UPSTREAM END)



NOTE: WATER MAIN SHALL BE 24" BELOW ALL STORM SEWER CROSSINGS.

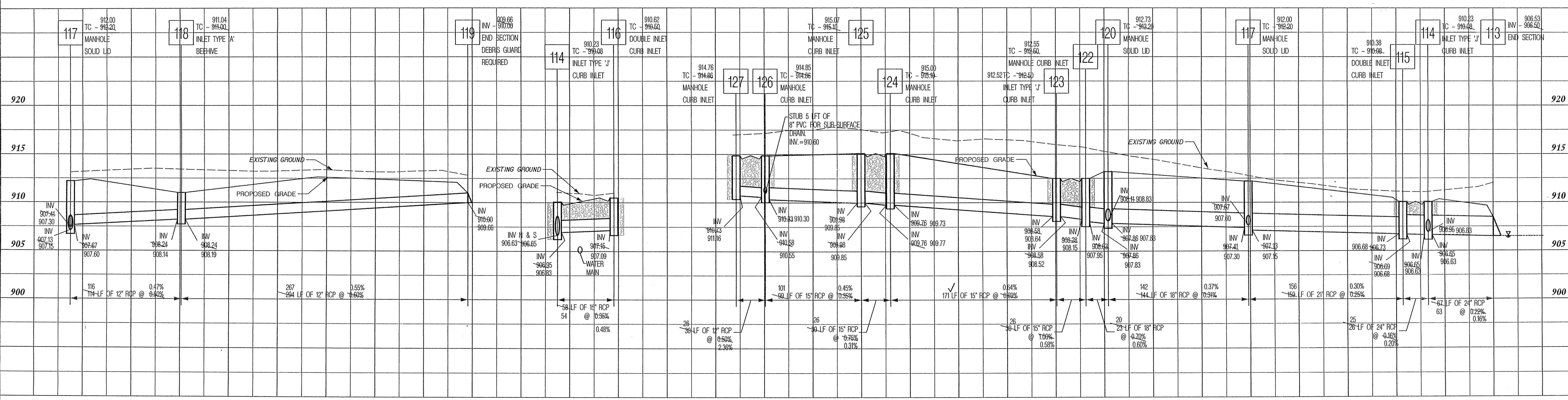
STREET NAME CHART

LINE	STREET NAME
A	LINCOLNSHIRE BOULEVARD
B	SEDGWICK LANE
C	TRALEE COURT
D	DONEGAL CIRCLE



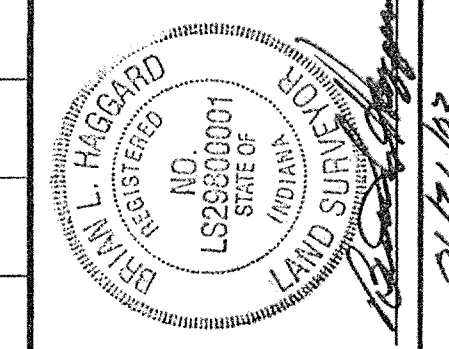
"DON'T DIG BLIND"

 1-800-382-5544
 CALL BEFORE YOU DIG



PLAN & PROFILE STRUCTURES

STORM SEWER PLAN & PROFILE
SEDGWICK
 HAMILTON COUNTY
 CARMEL, INDIANA



BANNING ENGINEERING
 698 TOWER ROAD, SUITE #100
 PLAINFIELD, IN 46168
 BUS. (317) 839-2581, FAX (317) 838-9171
 E-MAIL banning@banning-eng.com

Project No: 02022
 Sheet No:

U:\02022\Sec\01\02022s2nd.dwg 01/21/2003 02:05:50 PM
 This copy printed from the Digital Archive of the Hamilton County Surveyor's Office, One Hamilton Co. Square, Ste. 188, Noblesville, In 46060